

# 93358 VILANOVA

## General Information

Material number	93358
Type	system
Product segment	Indoor
Theme	sonstige / nicht zuordenbar

## Dimensions

Article Height (in mm)	200
Article Length (in mm)	2000
Net Weight	3.313 Kilogram

## Material & Colour

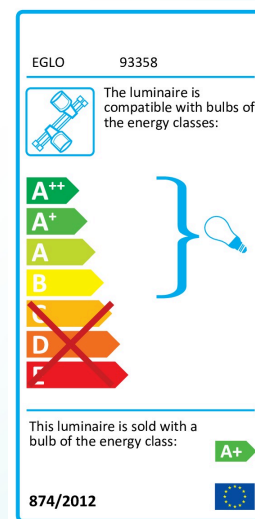
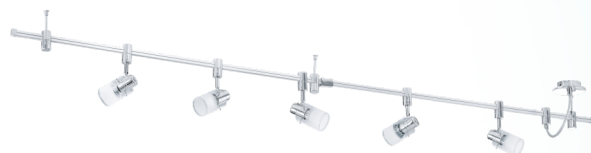
Enclosure Material	aluminium, steel
Enclosure Colour	aluminium, chrome
Glass/Shade Material	glass
Glass/Shade Color	white, clear

## Functionality

Switch Type	without switch
Battery	No

## Technical Information

Protection Degree	IP20
Protection Class	1
Mains Voltage	220-240V,50/60Hz
Operation Voltage	220-240V,50/60Hz



Technical changes reserved

## Illuminant 1

Socket Type (1)	GU10
Illuminant Type (1)	GU10-LED
Illuminant incl. (1)	INCLUSIVE
max. Wattage (1)	1X5W
Beamangle (in °)	110
Nominal Luminous Flux (in lm)	400
Equivalence With Incandescent Lamp (W)	35
Color Temperature	3000K warm white
Nominal Lifetime (in h)	25000
Switching Cycles	15000
Colour Rendering Index (Ra, CRI)	>80
Energy Efficiency Class	A+
kW/1000h	5
Rated Lamp Power (0,1W precision)	5
Color Tolerance (LED, SDCM)	<6



Technical changes reserved



**EGLO Leuchten GmbH**  
Heiligkreuz 22 | 6136 Pöll | Austria

Tel. +43 (0) 5242 / 6996 - 0  
Fax: +43 (0) 5242 / 6996 - 938  
[www.eglo.com](http://www.eglo.com)

my light | my style