

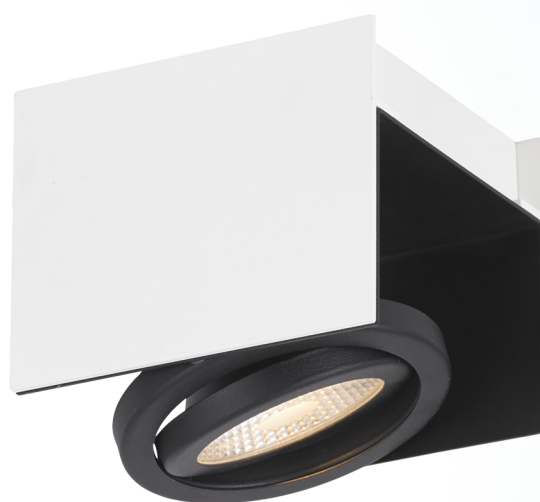
## 39315A VIDAGO

### General Information

|                 |                   |
|-----------------|-------------------|
| Material number | 39315A            |
| Type            | ceiling luminaire |
| Product segment | Indoor            |
| Theme           | Crystal & Design  |

### Dimensions

|                        |               |
|------------------------|---------------|
| Article Height (in mm) | 110           |
| Article Width (in mm)  | 128           |
| Article Length (in mm) | 140           |
| Net Weight             | 1.32 Kilogram |
| Canopy Length (in mm)  | 140           |
| Canopy Width (in mm)   | 128           |
| Canopy Height (in mm)  | 110           |



### Material & Colour

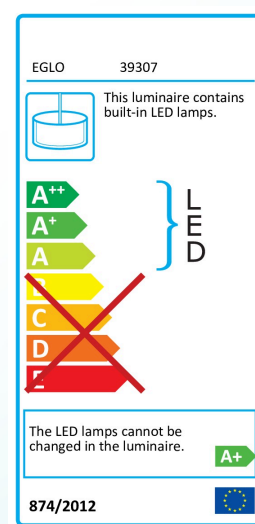
|                    |                  |
|--------------------|------------------|
| Enclosure Material | aluminium, steel |
| Enclosure Colour   | white, black     |

### Functionality

|             |                |
|-------------|----------------|
| Switch Type | without switch |
| Battery     | No             |

### Technical Information

|                   |               |
|-------------------|---------------|
| Mains Voltage     | 120V,60Hz (A) |
| Operation Voltage | 120V          |
| Dimmable          | Yes           |
| Certificate       | ETL/CE        |



Technical changes reserved

## Illuminant 1

|                      |           |
|----------------------|-----------|
| Socket Type (1)      | LED       |
| Illuminant Type (1)  | LED       |
| Illuminant incl. (1) | INCLUSIVE |
| max. Wattage (1)     | 1X5,4W    |
| Dimmable             | Yes       |



Technical changes reserved



**EGLO Leuchten GmbH**  
Heiligkreuz 22 | 6136 Pöll | Austria

Tel. +43 (0) 5242 / 6996 - 0  
Fax: +43 (0) 5242 / 6996 - 938  
[www.eglo.com](http://www.eglo.com)

my light | my style