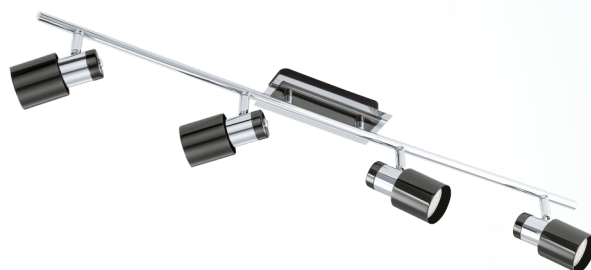


30835 DAVIDA 1

General Information

Material number	30835
Type	spot
Product segment	Indoor
Theme	sonstige / nicht zuordenbar



Dimensions

Article Width (in mm)	70
Article Length (in mm)	780
Net Weight	1.823 Kilogram

Material & Colour




Enclosure Material	steel
Enclosure Colour	nickel-nero

Functionality

Switch Type	without switch
Battery	No

Technical Information

Protection Degree	IP20
Protection Class	1
Mains Voltage	220-240V,50/60Hz
Operation Voltage	220-240V,50/60Hz

EGLO	30835
	The luminaire is compatible with bulbs of the energy classes:
A++	} 
A+	
A	
B	
C	
D	
E	
This luminaire is sold with a bulb of the energy class: A+	
874/2012	

Technical changes reserved

Illuminant 1

Socket Type (1)	GU10
Illuminant Type (1)	GU10-LED
Illuminant incl. (1)	INCLUSIVE
max. Wattage (1)	1X5W
Beamangle (in °)	110
Nominal Luminous Flux (in lm)	400
Equivalence With Incandescent Lamp (W)	35
Color Temperature	3000K warm white
Nominal Lifetime (in h)	25000
Switching Cycles	15000
Colour Rendering Index (Ra, CRI)	>80
Energy Efficiency Class	A+
kW/1000h	5
Rated Lamp Power (0,1W precision)	5
Color Tolerance (LED, SDCM)	<6



Technical changes reserved



EGLO Leuchten GmbH
Heiligkreuz 22 | 6136 Pöll | Austria

Tel. +43 (0) 5242 / 6996 - 0
Fax: +43 (0) 5242 / 6996 - 938
www.eglo.com

my light | my style